

**BOARD & COMMISSION**

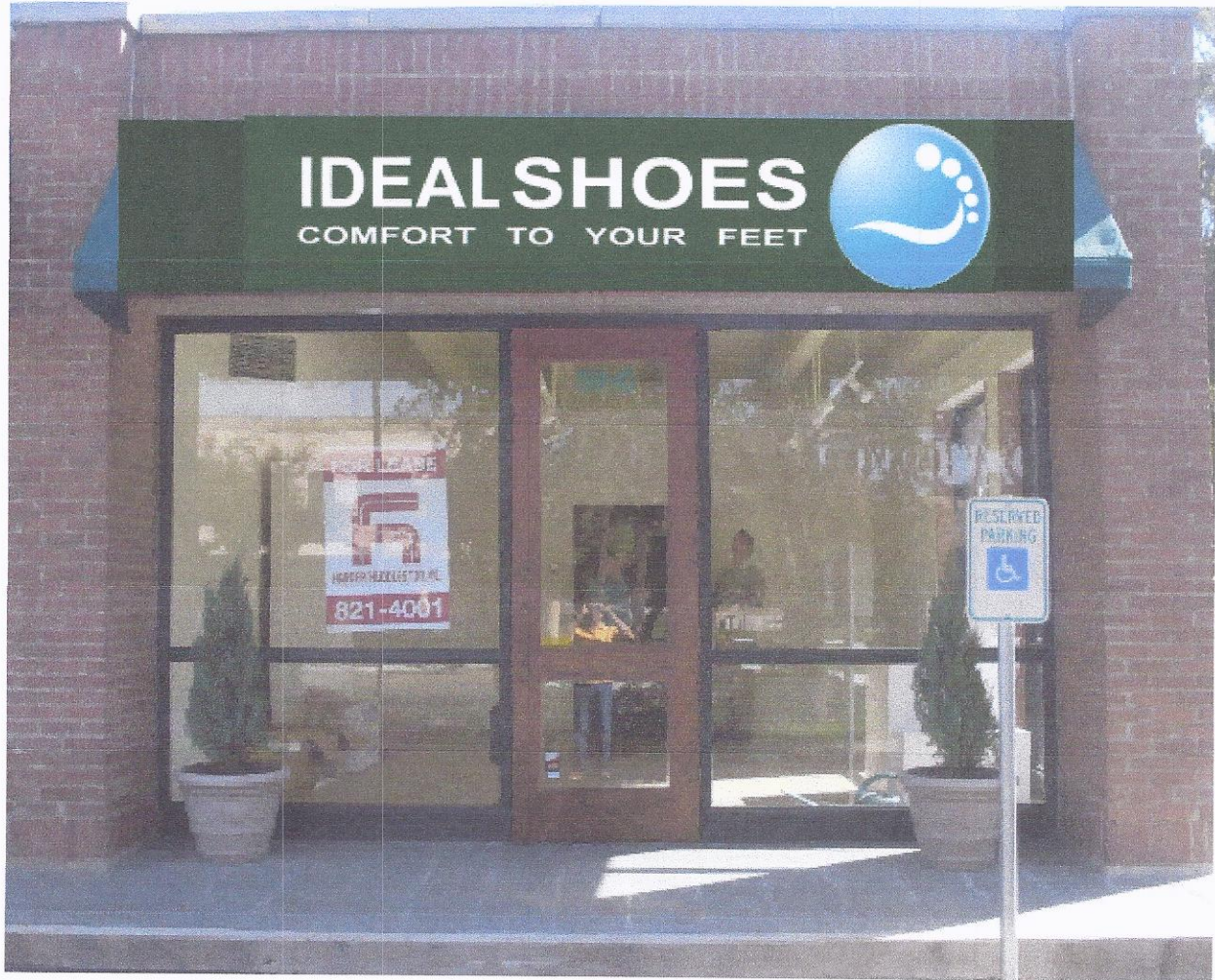
**PROJECT REVIEW APPLICATION**

For:



**5910 Broadway, Alamo Heights, Texas 78209**

## PHOTOGRAPH OF LOCATION OF PROPOSED SIGNAGE



### Description of the proposed project review

Elaboration of the sign on canvas printed with letters and logo in white, made of hemlock tweed sunbrella, color is green canvas same as everyone else space, repeating the same existing structure without any modification.

### Type of materials to be used for sign

Fabric: Sunbrella Hemlock Tweed to match the others.

### Colors

Green canvas and letters and logo in white to match the others

### Size/Style of lettering

Arial

### Illumination Plan

N/A

### Working scale drawings/ specifications

Next page



Seguin Canvas & Awning • 4945 N. State Hwy 123 • Seguin, TX 78155 • 830-379-6795 • FAX 830-303-1031

Emilii:

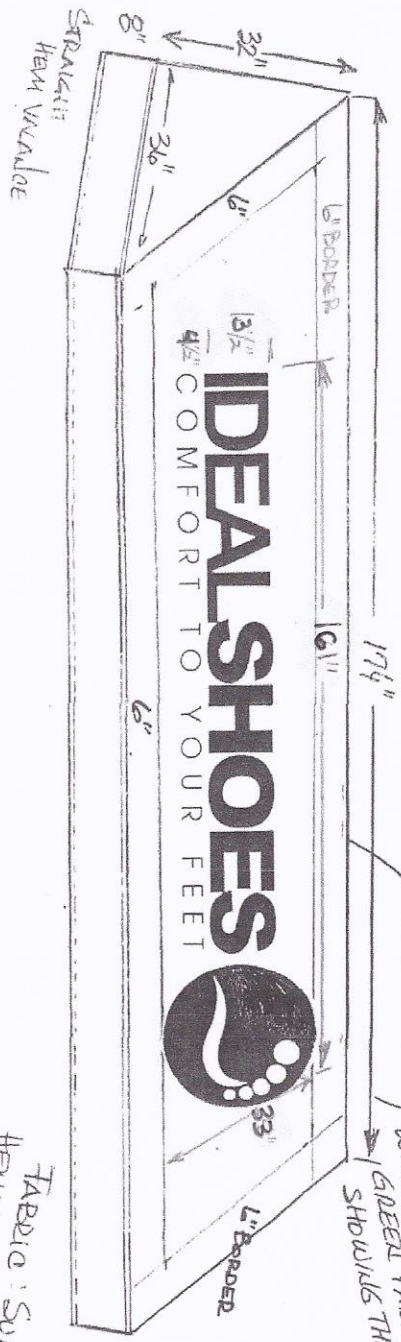
DOMEBOT FEET STORE  
5310 BRADDAWAY  
SAN ANTONIO, TX 78209

ATTN: DANIEL SALAZAR

Website: [www.seguincanvas.com](http://www.seguincanvas.com)

Emilii 10/11/10

LABOR AND MATERIALS TO MANUFACTURE AND INSTALL NEW COVER FOR EXISTING FRAME WORK - DETAILS BELOW -



LETTERS & CIRCLE TO BE WHITE THE FOOT PRINT WILL BE THE GREEN FABRIC SHOWING THRU.

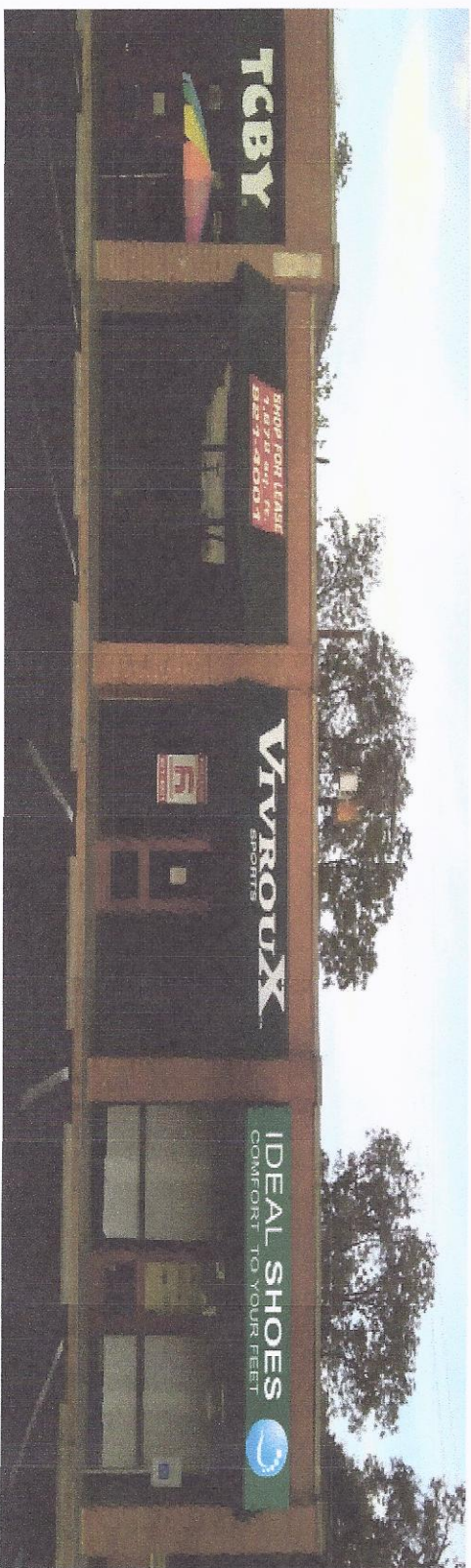
FABRIC: SUBRELLA HEMLOCK TUDED - TO MATCH THE OTHERS.

PRICE DOES NOT INCLUDE PERMIT OR PERMIT COSTS

# EXISTING SIGN



# PROPOSED SIGN



(CORNER TENANT)  
↙ ↘